

May 2023 Panui

Tēnā koutou katoa

It is my pleasure to update you all on the current Trust business.

As you may be aware, our Tauhara Moana Trust Annual General Meetings have been changed to biennial, so we aim to send out more regular panui to keep our owners informed and connected. Please ensure your contact details (especially email addresses) are up to date with our trust office He Akina. You can call them on 07 378 5180 or email admin@heakina.co.nz Monday – Friday, 8.30am – 4.30pm.

It has been a busy start to the year and it's hard to believe we are in May already. Our farm is preparing for the winter season, and we are grateful to our farm kaimahi and management team for navigating so effectively through the unpredictable weather conditions that have caught so many of us off-guard in 2023.

We are often on the lookout for farm staff, so if you or any whānau members would like to submit your CV for when a position becomes available, please email your interest to He Akina. It would always be our preference to employ our own whānau first.

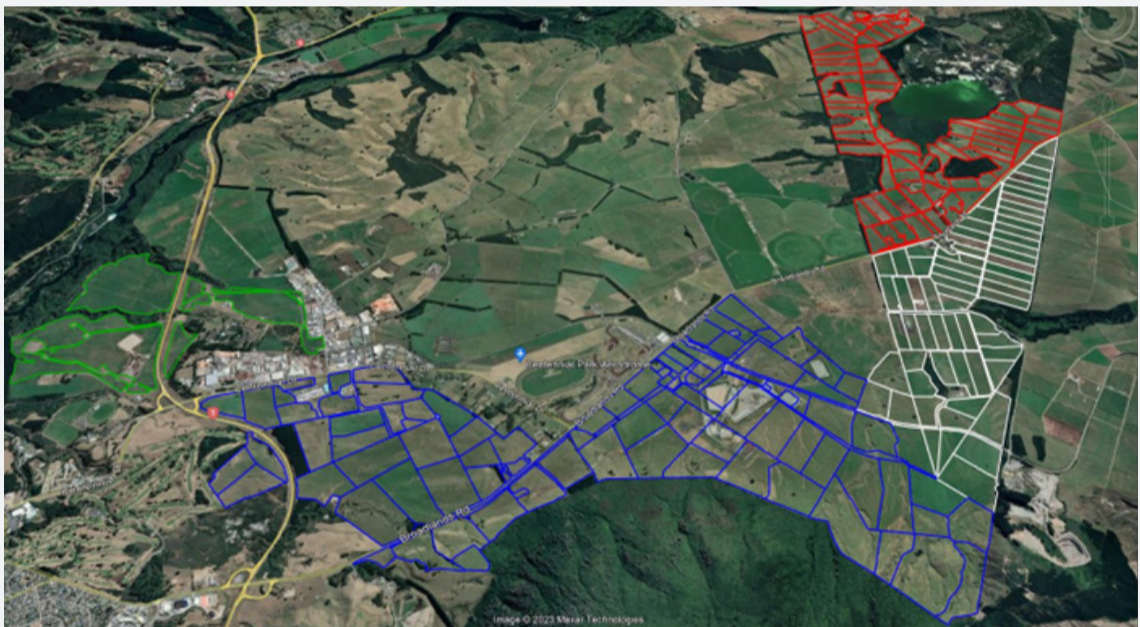
TAUHARA FARMS LIMITED PARTNERSHIP (TFLP)

Milk production has been under continued pressure despite the good rainfall and pasture growth over the last few months.

While our current daily production is currently on target, our farms are slightly below the annual target. This has resulted in a revision in the milk production forecast of 726,500 kgMS.

Farm gate prices have improved slightly since the start of the year on the back of improved in-market prices. However, the forecast Miraka 2022/23 midpoint milk price has dropped from \$9.00/kg MS to \$8.50/kg MS.

Soil temperature is still warm at 16 degrees Celsius – adequate for pasture growth before winter sets in.



We have entered TFLP into the DairyNZ 'BaseLine' project – which will allow us to compare our financial, greenhouse gas and water quality performance against 600 other farms with a view to identify more profitable and more environmentally friendly farming systems to protect the Waikato River as your taonga.

KAUMĀTUA GRANTS

Kaumātua Grants continue to be a way to manaaki our owners, in the form of putea and meat packs. These are provided to owners over 65 years of age, every November.

GEOTHERMAL

We continue to have a positive relationship with Contact Energy and are in regular contact with their executive team to explore commercial partnership opportunities.

ASSOCIATE TRUSTEE

Finally, we welcome the CV's of owners who would be interested in a Associate Trustee role on the Tauhara Moana Trust board. It has always been the intent of the Trust to create a succession plan for current Trustees, and to ensure the knowledge around the board table is passed on for kōrero o mua as well as business continuity.

The board meets once a month to oversee the Trust strategy and vision. As Associate Trustee, you will take an active role in the Trust business, learning the role of a board member and gaining direct experience.

If this is something you are interested in, please submit your CV to our Trust Office He Akina (admin@heakina.co.nz or 88 Kaimanawa Street, Taupō) before the 31st May 2023

Nāku noa nā,

Skay Rangī
Chairperson
Tauhara Moana Trust