



PANUI MAY 2023

Tena koutou katoa,

We hope you are all well and keeping warm as we prepare for winter months ahead!

We have had a busy few months and this panui is to report on some of the progress in our projects.

The most exciting development is the appointment of our He Tipu start-up management team - with all placements being Te Pae o Waimihia whānau!

There will be more positions available as He Tipu develops, so if you would like to register your interest please send your CV to Wahine Murch (Wahine. Murch@he-tipu.co.nz).

We have had great feedback on the amended Pakeke Grant, and whānau are enjoying having more control over applications in the online grants portal. If you haven't already, please go online (your login and password would have been sent to your email) and confirm your registration and contact details in your members page. If you need help logging in, call He Akina on 07 378 5180 for support.

The masterplan for the He Ahi site is almost complete and we are proud of what this investment represents for our whānau, being both commercially and environmentally focused. He Ahi will be a unique

industrial site for innovative businesses to operate sustainably. Our tohu for He Ahi has been finalised (last page in this panui) and we are proud of what it symbolises and represents.

We are currently conducting some research about our whānau experiences with local medical and health services. You might be a patient, whānau member, or a practitioner. Please see below for how you can share your views! This feedback will help guide us in where we look to develop future projects and / or grants.

And finally, we are aware of the increasing cost of kai and are trialing a Māra Kai initiative. We have 20 Garden Planter Raised Beds to give away for whānau to set up at home. See further in the panui for more details.

If you have any questions regarding any of the panui, please don't hesitate to get in touch!

On behalf of your trustees,

Ngahere Wall
Chairman, Te Pae o Waimihia

HAUORA FEEDBACK

We are currently conducting some research about our whānau experiences with their local medical and health services.

We would like to hear from members who are willing to share their experiences – both as patients or as practitioners in the medical and health industry.

The information you share will be used to help inform a project that will consider providing improved services to the Taupō rohe. Your individual kōrero will be confidential and no reference to individual names will be collected.

Project Manager Blandina Diamond will be interviewing willing whānau over the next few weeks.

Your kōrero will cover kaupapa such as:

- How have you found your local GP services?
- What has worked for you in this GP service and what doesn't work?
- How have you found your nearest hospital services?
- What other types of local medical or health services have you used? How have you found the experience with these services?
- What services are missing from your area?
- What sort of improvements would you like to see to your current GP and other medical services?

Please email blandina.diamond@tpow.co.nz or call Blandina on 027 2799 058 to share your feedback!

KAIMAHI START-UP TEAM

We recently appointed our He Tipu management / start up team, proudly filling all the roles by our own Te Pae o Waimihia whānau!

He Tipu Project Manager, Blandina Diamond says, “The staff we have recruited expressed strong connections to the outcomes of what we are trying to achieve, and that kōrero has been truly inspiring – it told us we were on the right track. That’s how I know we have a great team”.

We now move into Stage 1 - The establishment of: food production; training and workforce employment activities; native plant nursery and distribution capabilities; and the rangatahi programme.

If you would like to register your interest for any roles that may arise in the future, please email a copy of your CV to Wahine Murch (Wahine.Murch@he-tipu.co.nz).

Introducing our new kaimahi:

Waihaki Rameka: Workforce Manager



Hutia te rito o te harakeke kei whea te komako e ko.

Ki mai ki ahau. He aha te mea nui o te ao? Maku e ki atu.

He tangata, he tangata, he tangata.

This whakatauaki encompasses all my aspirations for He Tipu.

*Ko Waihaki Rameka tenei e mihi whakaiti nei.
Ki te taha o toku papa tona tipuna koroua Pakira Rangataua Ngāti Tutemohuta
Toku whaea tona tipuna koroua
Hapeta Te Heuheu Ngāti Tutetawha
Toku koroua Horomatangi Ngamotu
Ngāti Hineure
Toku kuia Rangituranga Ngamotu
Ngāti Rauhoto Ngāti Ruingarangi
Toku tipuna kuia Horiana Te Kurupae
Ngāti Te Urunga.
Tena ano tatou*

Waihaki Rameka was born and bred in Taupō and is married to Raewyn with two adult children, Te Rangi Tautahanga and Kahumako.

He has spent most of his life on and around Nukuhau Pa and has worked within various hapū trusts for the past 20 years.

Waihaki feels privileged to join He Tipu knowing how extensive the opportunities will be for the hapū.

Diane Karaitiana: Site Supervisor



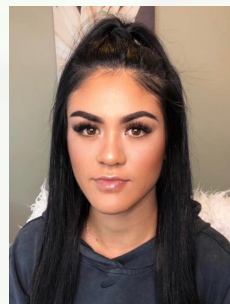
Diane Karaitiana has whakapapa to Te Pae o Waimihia through Ngāti Kurapoto and Ngāti Tutemohuta (Nanny papa Moari Karaitiana / papa Erimana Karaitiana). She also has whakapapa to Tamatakutae, Rongomaiwahine and Ngāti Kahungunu.

Diane is a proud mum of two sons (aged 6 and 4), with another one on the way! They currently live in their whānau home in Rangitaiki.

Diane has 15 years’ experience working and previously owning a business in the agricultural sector. She has been involved in the administration and various governance roles for Tauhara Hapu including Opepe Farm Trust and Wharetoto 5B Inc. More recently she has been appointed as the Project Coordinator for Whakarakei Whenua Committee (also with Opepe Farm Trust).

Diane is excited to be working alongside whānau at He Tipu and is excited to share her skill base and knowledge in the new role.

Wahine Murch: Operations Coordinator



Wahine Murch is a descendant of Marama Wall and Atareta Waititi, she is the eldest mokopuna of Tuahine Raureti Wall and Barbara Anne Wall (nee Skudder).

He uri ia nō Ngāti Tūtemohuta, ko Pakira te tangata, ko Pakira te marae.

Wahine was raised in Waitahanui and currently lives there with her partner Heta and gorgeous 8-month-old pēpi.

She was the first Chairperson at Youthlaw’s Youth Advisory Committee and has previously worked at He Akina, Tūaropaki Trust, and the Rotorua District / High Court. Wahine is an aspiring lawyer, currently studying bachelor of Māori Laws and Philosophy.

Her passion is in supporting whānau, particularly rangatahi in governance spaces. Wahine will be a valuable asset to He Tipu as the Operations Coordinator.

Rana Tahau: Training Manager



Rana Tahau (Ngāti Tutemohuta) was living in Hastings before accepting the role of Training Manager with He Tipu.

She is currently relocating to Waitahanui with husband Glynne Jennings, and children Meihana, Nikora, Aria, Apiata and Mātua.

One of Rana's daughters is takiwātanga, and this has encouraged her passion for Rongoā Māori, seeing her currently studying towards a Level 5 Diploma in Rongoā. Rana also practices Hua Parakore and Kai Oranga and is looking forward to working on He Tipu – as the possibilities to grow kai and rongoā are endless.

Rana has over 20 years' experience working for government departments in New Zealand and Australia in various roles including operations analysis, policy, training coordination and project management.

Mark Ross: Plant Nursery Manager



Ko Ngāti Hineure raua Ngāti Hinerau oku hapū.

Ko Waipahihi te marae.

Mark has a background is in environmental science, information systems, resource sustainability and policy development.

He joins He Tipu as manager for the māra kai and nursery mahi, and his knowledge in horticulture and project management will make a great addition to the team.

Mark says he is really inspired by the He Tipu vision, and looks forward to helping build a positive and sustainable future for all our Tauhara whānau and whenua.



MĀRA KAI

With the rising cost of kai, this kaupapa looks to help members to become more self-sufficient in growing their own vegetables!

We have 20 garden planters to give away to registered members, comprising of the following:

- A two-tier vegetable planter box
- Six, 40 litre bags of soil
- Twelve vegetable seedlings

Successful applicants will be required to feedback twice for marketing purposes:

- On receiving the garden planter a photo of the completed set-up must be emailed to He Akina (Trust Office).
- A progress update (photos and feedback) must be provided two months after set-up.

These photos may be used in Te Pae o Waimihia member panui and on our facebook page!

To be considered for a garden planter, please register your interest to admin@heakina.co.nz before 5pm, Monday 15th May 2023.

Please note: successful recipients will be required to pick up the planters from **Mitre 10 Taupō**.





HE AHI

He Ahi is Te Pae o Waimihia's Eco Business Park - 45 hectares of industrial-zoned land in Taupō.

The park will have over 40 lots, many of them powered by geothermal energy. It will be a special place to promote the use of renewable energy, kaupapa Māori and other environmental and climate outcomes.

Land and buildings will be developed to meet customers specific requirements and leased out on a long term basis.

For any questions regarding He Ahi, please contact Project Manager Blandina Diamond. Phone 027 2799 058, or email blandina.diamond@tpow.co.nz.

** While on top of Tauhara, Ngatoroirangi had seen a majestic mountain to the south. He thought to himself that he must venture there and climb that mountain as well. He travelled south and arrived at a place called Hamaria, when the setting sun disappeared. He turned to his followers and said, "The night has settled, let us stop here". Hence the name, Taupō (Tau - settle and pō - night).*

When dawn broke the rested travellers continued on their journey and after many stops arrived at the base of Tongariro. The group began their ascent to the summit of Tongariro and along the way encountered challenges. The final challenge saw a blizzard of snow and ice carried by Tawhirimatea, the God of Winds, descend upon the party.

Seized by the bone chilling cold, Ngatoroirangi was in danger of perishing so he called to his sisters Kuiwai and Haungaroa in Hawaiki for assistance.

*"Kuiwai e! Haungaroa e! Ka riro au i te Tonga.
Tukuna mai te ahi!"*

*"Oh Kui! Oh Hau! I have been captured by the southern winds.
Send me fire!"*

His sisters heard his urgent plea and quickly filled six baskets with glowing embers, the off-spring of Ruaumoko, the God of Volcanic Energy. The sisters then dispatched the demigod siblings Te Hoata and Te Pupu to deliver the heat to Ngatoroirangi. Te Hoata and Te Pupu plunged deep into the earth and travelled swiftly toward Ngatoroirangi in Aotearoa.

The journey of Te Hoata and Te Pupu to Tongariro saw them surface at many places including; Whakaari (White Island), Moutohora (Whale Island), Rotoiti, Tarawera, Rotorua,

Orakei Korako, Wairakei, Tokaanu and finally Ketetahi at Tongariro. Embers were left behind at these places and only one basket of fire managed to reach Ngatoroirangi. With this he became angry and thought, how am I to be warmed by this one basket of fire? Ketetahi (kete - basket and tahi - one).

In his rage he stomped his feet twice violently shaking the earth. Ruapehu (rua - two and pehu - vent). He then slammed his paddle deep into the earth. Ngauruhoe (Ko te Ngaurutanga - the shaft of his paddle and hoe - paddle). Through the ferocity of his actions the one remaining basket containing embers exploded into life bringing forth the raw power of Ruaumoko, God of volcanic energy.

With this, Ngatoroirangi began to regain warmth and was revived.

He Ahi Tāmou - Volcanic Fire.

He Ahi Tupua - Geothermal Resources.

This is where we derived the name He Ahi, and the tohu has been created using fire as the main element.

The flame was created using the koiri design which links He Ahi to the parent brand Te Pae o Waimihia (and also He Tipu). Koiri features in the Te Pae o Waimihia taurapa six times, symbolic of the six hapū. It represents leaves of the trees / wind blowing, unity (whānau looking after each other) and growth.

The main colours are ocre and gold, which represent fire and embers - 'Still active to this day'. The colour suite uses the same earth tones as Te Pae o Waimihia and He Tipu.

** Note: This is our version of the well-known pūrākau, and we acknowledge it may not exactly match other versions.*