



**TENA KOUTOU KATOA,**

We hope you are all well and healthy and are prepared for another New Zealand winter. The last few months through Covid-19 response have been disruptive to our everyday way of life, but what a huge accomplishment we have achieved as a rohe, and a nation.

Such extreme measures though do come at a price, and we realise that even though we are out of lockdown, things are far from normal.

During Level 2, we were proud to be able to provide a limited amount of kai packs to whānau identified by our marae as vulnerable. These packs included pantry staples, fresh produce, cleaning supplies, Opepe Farm Trust mutton, and more. This exercise highlighted how some whānau are really struggling and so, He Akina (Trust Office) are now managing an emergency support initiative. If any of our whānau are struggling to put kai on the table, please phone 07 378 5180 or email [admin@heakina.co.nz](mailto:admin@heakina.co.nz). Along with other Tūwharetoa entities, we want to be able to support whānau who are most in need at this time.



**WAITANGI TAUPŌ MOANA FESTIVAL**

This year we were proud to be one of the sponsors for the successful Waitangi festival hosted by Nukuhau Pā in association with Taupō District Council. The free event headlined House of Shem, Hollie Smith, Annie Crummer and the Brown Brothers, and included a children’s fun zone, kai stalls and waka ama rides for the whānau.

**FIREWOOD DISTRIBUTIONS**

Every year, Te Pae o Waimihia supply firewood to Te Pae o Waimihia marae which is distributed to kaumātua and vulnerable whānau deemed to have the highest need. This season, the repercussions of the Covid-19 lockdown saw a greater need (with full homes and more heating required), and so we were pleased to be able to provide extra loads of firewood for our whānau.

**GRANTS AND DISTRIBUTIONS**

We are pleased to announce the introduction of the Te Pae o Waimihia Dental Grant, available to Te Pae o Waimihia members aged between 18 and 50 years. This grant is to contribute towards preventative dentistry and dental hygiene treatments, up to the value of \$250 per calendar year.

The following Te Pae o Waimihia grants are still available to registered members, with full Terms and Conditions (including processing dates) on the application forms. Application forms can be sourced through He Akina, or on [tepaewaimihia.com](http://tepaewaimihia.com).

Tangihanga Grant - Available for the tangi of Te Pae o Waimihia members (or immediate family) who lay at a Te Pae o Waimihia marae. This grant is applied for through the marae representative.

Education Grant (years 0 - 10) - Available grant of up to \$200 per calendar year to contribute towards school fees, stationery, school activities, and/or uniforms.

Sporting Participation Grant - Up to \$100 per calendar year to contribute towards sporting fees, subscriptions, equipment and uniforms.

Sporting Representation Grant - Up to \$300 per calendar year, per sporting code to contribute towards fees, subscriptions, equipment, uniforms and travel.

Pakeke / Kaumātua Medical Grant (50 years and over) -  
Dental treatment: up to \$1000 per calendar year.  
Hearing treatment: up to \$1000 per calendar year.  
Eye treatment: up to \$500 per calendar year.

## KAUMĀTUA HEALTHY AND ACCESSIBLE HOMES

Last year, we introduced the Kaumātua Healthy and Accessible Homes grant which was available to Te Pae o Waimihia kaumātua aged 70 years and over. The grant was established to contribute towards the costs of improving health and accessibility of their homes (i.e. insulation, mobility ramps, hand rails, bathroom accessibility).

Since introduction, Te Pae o Waimihia has funded the improvements of over 18 homes in the Taupō region,

greatly benefiting the health and wellbeing of our kaumātua.

Applications are considered throughout the year and will go through a needs assessment process for prioritisation. Any queries, and for applications please contact He Akina.

The following images showcase some of the many home improvements including access ramps, bathroom aids, and safety rails.



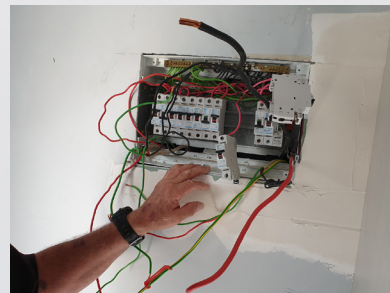
Left to right:  
Jan Rameka and Manu Vincent (Project Managers).  
Entrance steps and rails.  
Bathroom support features.



Left to right:  
'Before' renovations.  
'After' accessibility ramp, handrails and steps.  
'The Handyman' Ross and Hedley Darling.



Left to right:  
'Before' renovations.  
'After' decking, steps and handrails.  
Toilet and handrails.



Left to right:  
'Before' renovations.  
'After' accessibility ramp, handrails and steps.  
Rewiring meter box.

## CELEBRATING MATARIKI

In celebration of Matariki, we have two adults prize packs (Moon Gardening book, Māori seed potatoes, gardening set) and two tamariki prize packs (The Seven Kites of Matariki book, spade, and seeds) to give away!

To enter, visit our Te Pae o Waimihia facebook page and comment on the competition post, the pack you would like to win or email us at [admin@heakina.co.nz](mailto:admin@heakina.co.nz). Winners will be announced 13th July on our facebook page!

